



The VCE135 is a compact truck that offers high performance, excellent capacity and a good working environment for order picking and pallet handling applications.



Technical Details		VCE135 Dx	VCE135 Tx
Power unit		electrical, battery	electrical, battery
Operating type		stand on/ride on	stand on/ride on
Rated capacity	kg	1350	1350
Load centre	mm	600	600
Weight without battery, min./max.	kg	5000—6200	5700—6600
Wheel type		Vulkollan	Vulkollan
Wheel dimension, fork side	mm	Ø 380 x 165	Ø 380 x 165
Wheel dimension, drive wheel side	mm	Ø 406 x 178	Ø 406 x 178
Number of wheels, fork side		2	2
Number of wheels, drive wheel side		1	1
Travel speed, without/with rated load	km/h	11.0/11.0	11.0/11.0
Main lifting speed, without/with rated load	m/s	0.42/0.40	0.40/0.38
Auxiliary lifting speed, without/with rated load	m/s	0.40/0.30	0.40/0.30
Main lowering speed, without/with rated load	m/s	0.35/0.40	0.35/0.40
Auxiliary lowering speed, without/with rated load	m/s	0.20/0.40	0.20/0.40
Drive motor/Intermittent rating (S2 60')	kW	7.5	7.5
Lift motor/Intermittent rating (S3 15%)	kW	22.0	22.0
Battery weight, min.	kg	2 x 760 (1520)	2 x 760 (1520)
Battery (5h discharge)	V/Ah	80/560	80/560
Battery (5h discharge)	kWh	44.8	44.8
Service brake		electric	electric
Parking brake		electro-mechanical	electro-mechanical
Steering system		electric, AC	electric, AC
Speed control		Variable AC	Variable AC

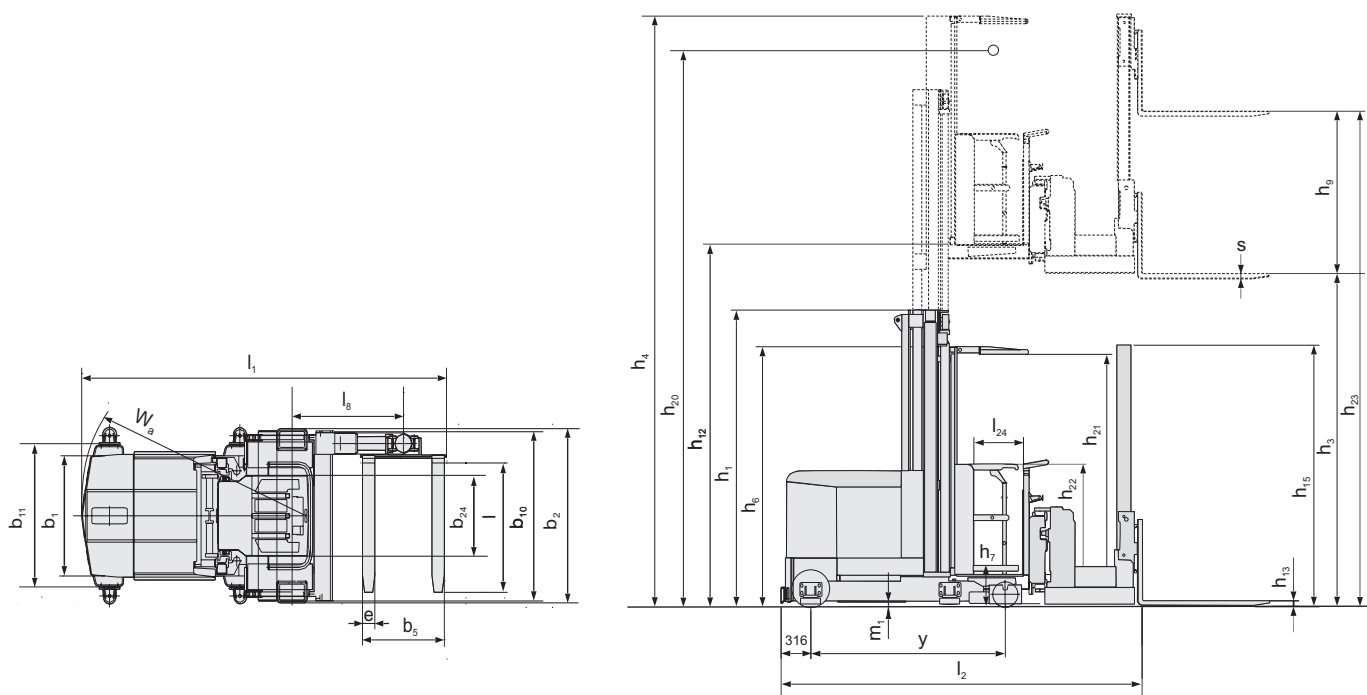
Dimensions, mm		VCE135 Dx	VCE135 Tx
y	Wheel base	2000	2000
b <sub>10</sub>	Track width fork side c/c	1135—1585	1135—1585
b <sub>11</sub>	Track width rear c/c	0	0
h <sub>6</sub>	Height of cab	2470	2470
h <sub>7</sub>	Instep height	420	420
h <sub>9</sub>	Auxiliary lift movement	1600, 1800	1600, 1800
h <sub>13</sub>	Height of lowered fork	70	70
h <sub>15</sub>	Height of auxiliary lift mast	2475, 2675	2475, 2675
h <sub>21</sub>	Height of cab inside	2010	2010
h <sub>22</sub>	Height of cab sides	900	900
l <sub>1</sub>	Total truck length	3990	3990
l <sub>2</sub>	Truck length incl. fork front face	3760	3760
l <sub>8</sub>	Front axle to boom pivot	1101—2015	1101—2015
l <sub>24</sub>	Entrance width	430	430
b <sub>1</sub>	Chassis width, back	1280	1280
b <sub>2</sub>	Chassis width, front	1300—1750	1300—1750
b <sub>24</sub>	Cab width	1180-1780	1280-1780
s	Fork thickness	50	50
e	Fork width	120	120
l	Fork length	1200 (700—1600)	1200 (700—1600)
b <sub>5</sub>	Width across fork	564—1324	564—1324
m <sub>1</sub>	Floor clearance	65	65
W <sub>a</sub>	Turning radius	2316	2316

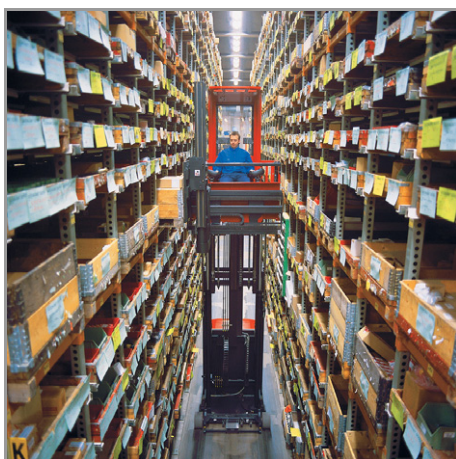
Truck performance and dimensions are nominal and subject to tolerances.  
BT Products AB products and specifications are subject to change without notice.  
All data is based on VDI 2198.

Mast, mm		VCE135 Duplex Tele							
$h_{12}$	Platform height	4420	4920	5420	6420	7420	8420	9420	10420
$h_3$	Lift movement	4000	4500	5000	6000	7000	8000	9000	10000
$h_{20}$	Picking height	6020	6520	7020	8020	9020	10020	11020	12020
Standard Auxiliary									
$h_{23}$	Total lift height <sup>1)</sup>	5600	6150	6650	7650	8650	9650	10650	11650
$h_1$	Height of truck, min.	3250	3500	3750	4250	4750	5250	5750	6250
$h_4$	Height of truck, max.	6530	7030	7530	8530	9530	10530	11530	12530
High Auxiliary (Option)									
$h_{23}$	Total lift height <sup>1)</sup>	5850	6350	6850	7850	8850	9850	10850	11850
$h_1$	Height of truck, min.	3250	3500	3750	4250	4750	5250	5750	6250
$h_4$	Height of truck, max.	6823	7323	7823	8823	9823	10823	11823	12823

Mast, mm		VCE135 Triplex Tele								
$h_{12}$	Platform height	4920	5670	6420	7170	7920	8670	9420	10170	10920
$h_3$	Lift movement	4500	5250	6000	6750	7500	8250	9000	9750	10500
$h_{20}$	Picking height	6520	7270	8020	8770	9520	10270	11020	11770	12520
Standard Auxiliary										
$h_{23}$	Total lift height <sup>1)</sup>	6150	6900	7650	8400	9150	9900	10650	11400	12150
$h_1$	Height of truck, min.	2750	3000	3250	3500	3750	4000	4250	4500	4750
$h_4$	Height of truck, max.	7030	7780	8530	9280	10030	10780	11530	12280	13030
High Auxiliary (Option)										
$h_{23}$	Total lift height <sup>1)</sup>	6350	7100	7850	8600	9350	10100	10850	11600	12350
$h_1$	Height of truck, min.	2813	3000	3250	3500	3750	4000	4250	4500	4750
$h_4$	Height of truck, max.	7323	8073	8823	9573	10323	11073	11823	12573	13323

1)  $h_{23} = h_3 + h_9 + s$





- The stable chassis and rigid duplex mast allows the VCE135 to lift a 1350 kg load up to 7.5 m and 800 kg up to 12.0 m.
- The spacious cab is designed to encourage peak operator performance by keeping stress and strain to a minimum.
- Operator controls that are close to hand whether the driver is standing or sitting. The uncluttered cab front gives a good view of the fork unit and an excellent picking environment.
- The Can-Bus simplifies the electrical system by reducing wiring and increases the flexibility of the truck control system.
- A compact truck for compact storage that fits into a 1460 mm wide aisle with ease. Can be adapted to fit most common aisle and load sizes as standard.



Truck features	VCE135
Adjustable fork width	S
Elevating platform	S
Wire/rail guidance	O
Controls and instruments	
Electronic height indicator	S
Power/electronic steering	S
Steering direction indicator	S
Sideshift	O
Driving features	
Automatic deceleration	S
Electronic braking system	S
Electronic speed control	S
Safety features	
Automatic parking brake	S
BT Optipace system	S
Clear view mast	S
Electronic support arm brakes	S
Drivers compartment features	
Adjustable seat	S
Adjustable steering wheel	S
Low step-in	S
Writing table	O
Maintenance features	
Fault diagnosis facility	S
Battery management features	
Battery status indicator	S
Battery discharge prevention system	S
Sideways battery change	S

S = Standard feature                      O = Optional feature                      — = Not available

